

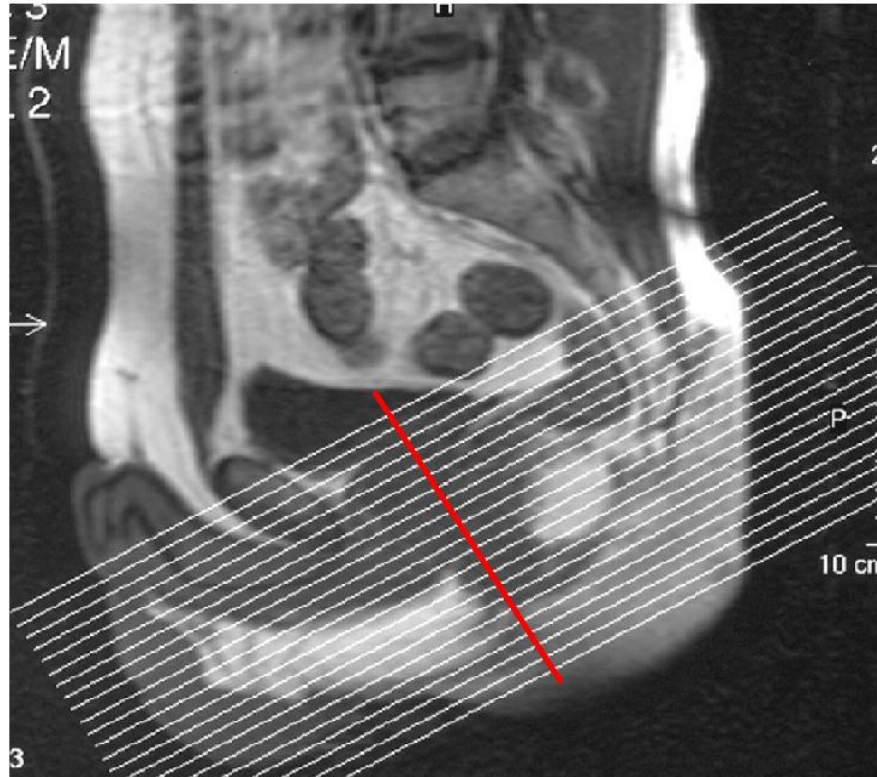
ANAL FISTULA

CLINICAL INDICATIONS:		-Evaluate for suspected fistula -Complex fistula -Evaluate anatomy of fistula							
parameter	SERIES 1	SERIES 2	SERIES 3	SERIES 4	SERIES 5	SERIES 6	SERIES 7	Series 8	SERIES 9
description	3-PLN LOC	Calibration Scan	COR Stir(whole Pelvis)	AX T2 Propeller	AX T2 Propeller FS	COR T2 Propeller	COR T2 Propeller FS	Sag T2 Propeller	AX LAVA-Flex +C
entry position	supine Feet First	supine Feet First	supine Feet First	supine Feet First	supine Feet First	supine Feet First	supine Feet First	supine Feet First	supine Feet First
coil	32Ch Cardiac	32Ch Cardiac	32Ch Cardiac	32Ch Cardiac	32Ch Cardiac	32Ch Cardiac	32Ch Cardiac	32Ch Cardiac	32Ch Cardiac
plane	3-PLN	Axial	Oblique	Oblique	Oblique	Oblique	Oblique	Oblique	Axia
pulse seq.	Spin Echo	Gradient Echo	IR						LAVA-Flex
im options	Seq, Fast, SS	Fast, Calib	Seq, EDR, TRF, Fast, ARC						EDR, Fast, MPH, ZIP2, ARC
PSD Name		FSEC	fse-xl						
Te	80.0ms		50.0ms	91.509ms	91.509ms	91.509ms	91.509ms	91.509ms	Min
TR	Minimum	400	4875.0	4.79s	4.79s	4.79s	4.79s	4.79s	prep 39
TI			149						
flip angle				160.0 Degrees	160.0 Degrees	160.0 Degrees	160.0 Degrees	160.0 Degrees	12 Degrees
ETL				28	28	28		28	
RBW	83.33		35.71KHz	83.333KHz	83.333KHz	83.333KHz	83.333KHz	83.333KHz	100.00KHz
SATS									Location A
FOV	40	50	40	20	20	20	20	20	20
slice thick	8	15	3.0	3	3	3	3	3	4
spacing	0	0	0	0	0	0	0	0	*0 overlap locations
Slice order	Interleaved	Interleaved	Interleaved						34 locs, Interleaved
F Phase		320	416	320	320	320	320	320	320
P Phase		160	266	48	48	48	48	48	320
NEX		4	1.5	6	6	6	6	6	2
Phase FOV	1	1	1	20	20	20	20	20	0.80
FREQ DIR	Unswap	R/L	S/l						R/L
Auto Shim	Auto	Auto	Auto						
contrast	No	No	No	No	No	No	No	No	YES

comments:

- *Send only water weighted images to PACS
- *Glucagon: 1mg IM administered 2 minutes prior to procedure
- **ALL Axials including lavas should be Axial to Anal canal NOT body.

Revised 11-11-13

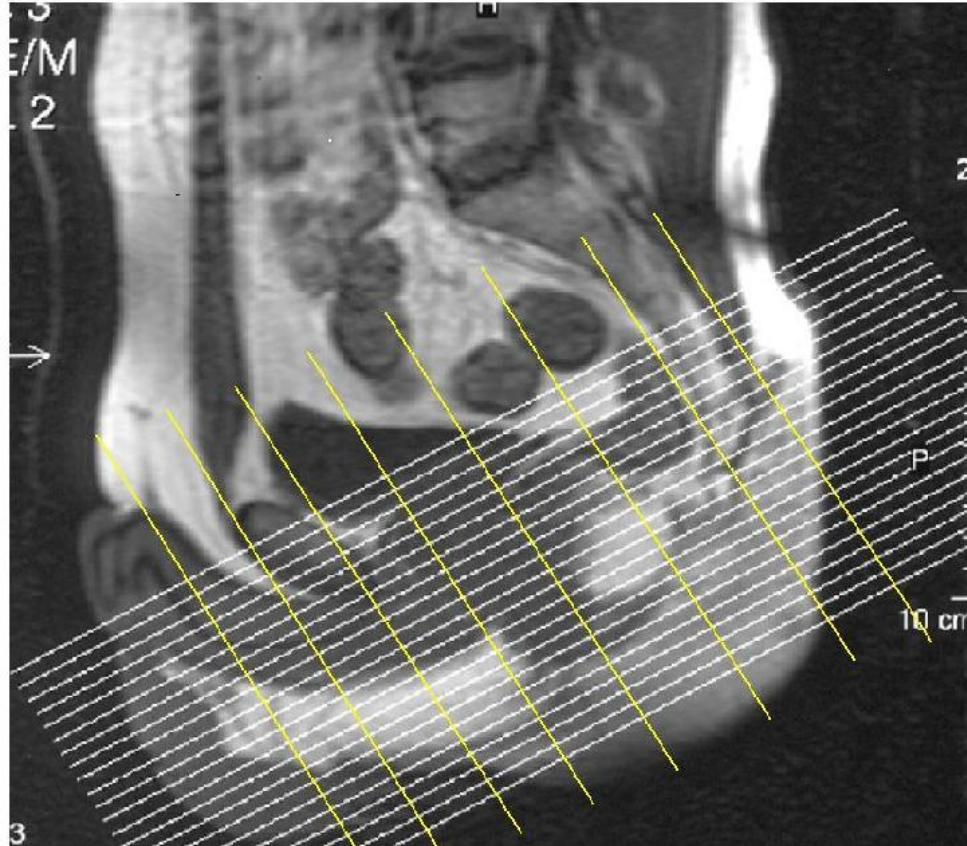


Correct orientation for imaging Anal Canal.

Red line = Anal Angle

White lines = Axial Slices

Axial slices are orientated so they are transverse to Anal Canal including LAVAs.



Correct orientation for imaging Anal Canal.
Yellow Lines = Coronal Slice orientation
Coronal Slices form 90 angle with Axial slices.