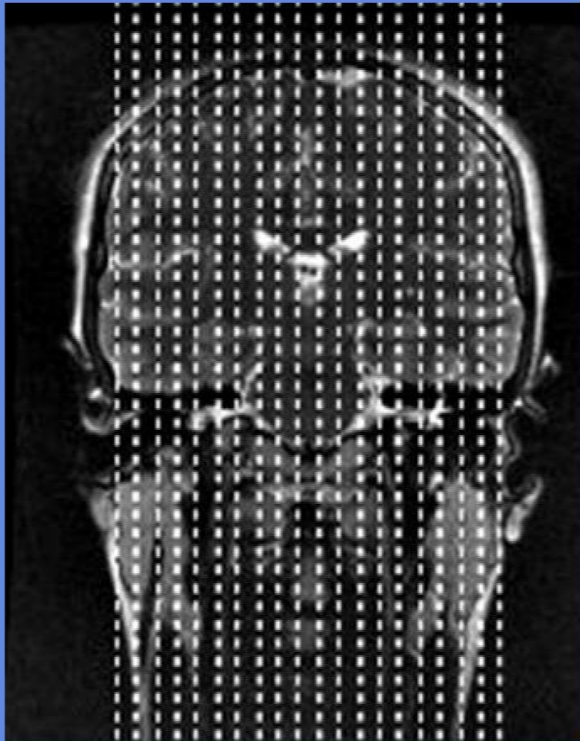


BRAIN ROUTINE

CLINICAL INDICATIONS: H/A'S, TIA'S, CVA, NUMBNESS

parameter								
description	3-PLN LOC	T1 SAG	DWI AX*	T2 AX	GRE AX	FLAIR AX	T1 AX	T1 AX C+
entry	supine	supine	supine	supine	supine	supine	supine	supine
position	head first	head first	head first	head first	head first	head first	head first	head first
coil	Head	Head	Head	Head	Head	Head	Head	Head
plane	3-PLN	SAGITTAL	AXIAL	AXIAL	AXIAL	AXIAL	AXIAL	AXIAL
pulse seq.	FGRE	spin echo	EPI	FRFSE / PROP	EPI	T2flair / prop	spin echo	spin echo
im options		EDR,ZIP512	DIFF	TRF,ZIP512,FC		TRF,ZIP512,FC	EDR, ZIP512	EDR, ZIP512
PSD name								
Te		Min Full	Min	102	25	140	Min Full	Min Full
TR		475	8000	4500	7000	9000	550	550
Tl						2200		
flip angle					90			
ETL				13				
RBW		20		41	41	20	20	20
SATS								
FOV	25	23	24	24	24	24	24	24
slice thick	5	5	5	5	5	5	5	5
spacing	5	1	1	1	1	1	1	1
F Phase	256	320	128	320	256	416	320	320
P Phase	128	192	128	192	416	224	192	192
NEX	1	1	2	1	2	1	1	1
Phase FOV	1	1	1	1	1	1	1	1
FREQ DIR		S/I	R/L	A/P	A/P	A/P	A/P	A/P
COVERAGE	BRAIN	BRAIN	BRAIN	BRAIN	BRAIN	BRAIN	BRAIN	BRAIN
contrast								1mmol/kg
comments:	Cancer patients run T1 POST all 3 planes			* Process eADC and ADC MAPS				

BRAIN



Sagittal offsets



Axial offsets