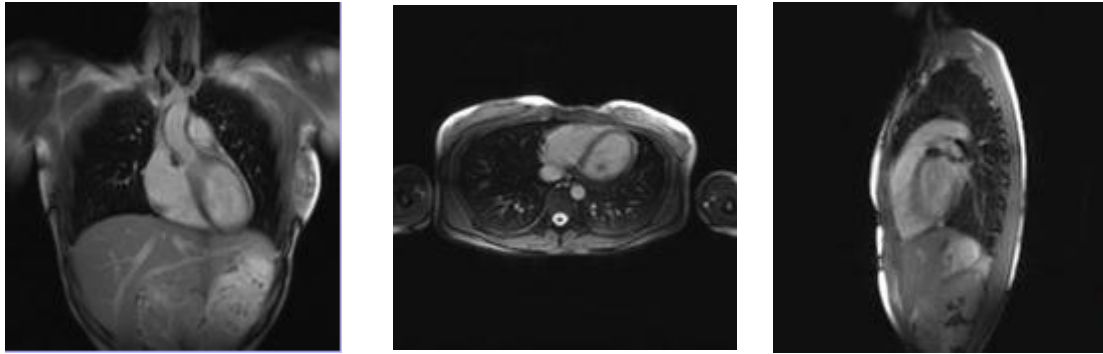
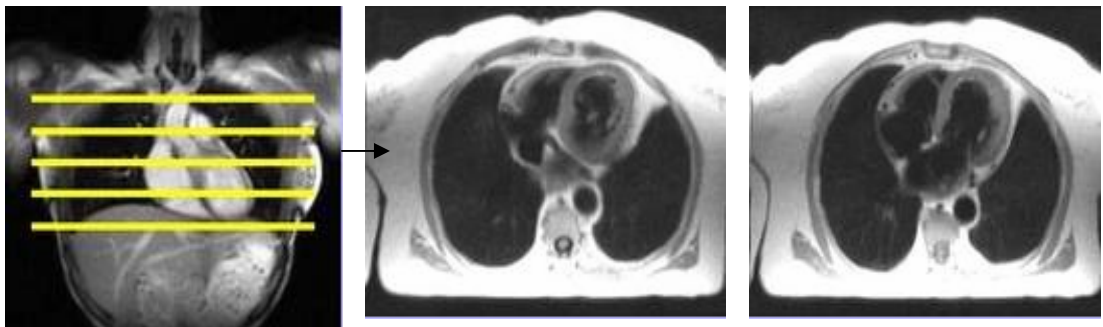


Cardiac axis

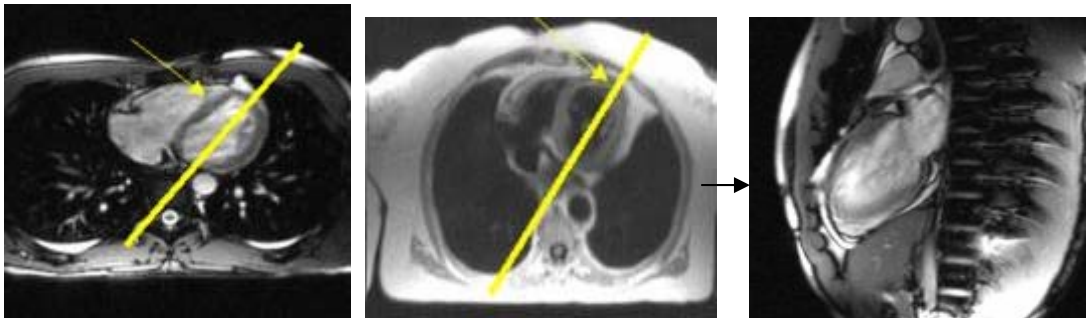
Multiview Localizer



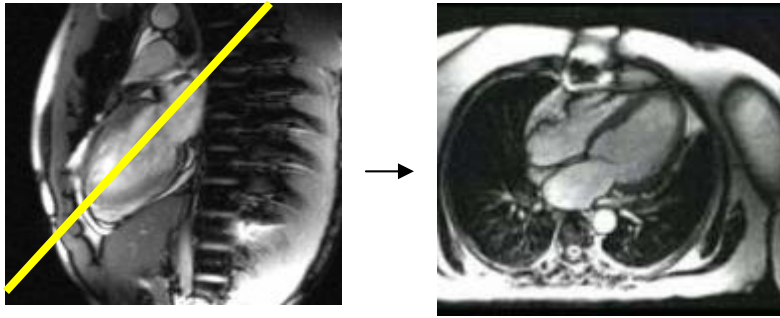
Axials Localizer



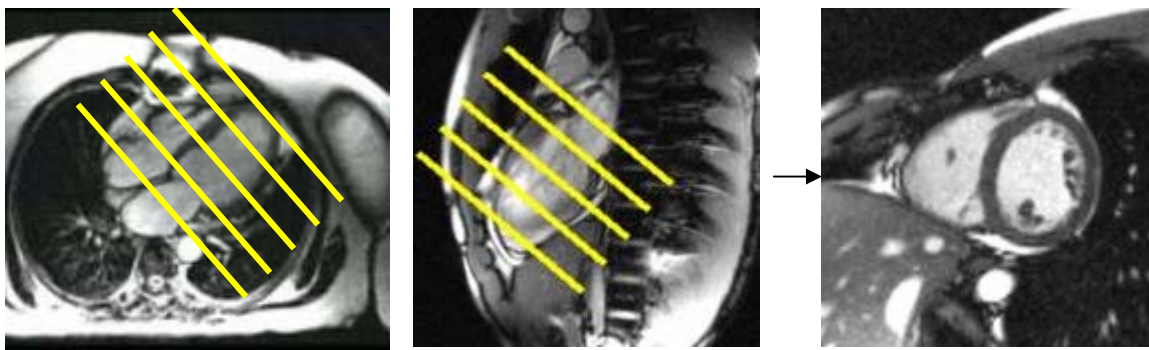
2 chambers Vertical Long Axis



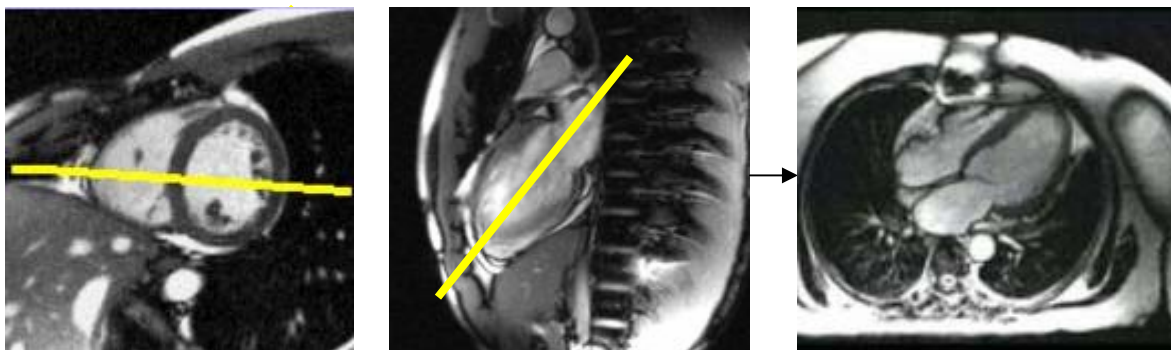
(Pseudo) 4 Chambers view



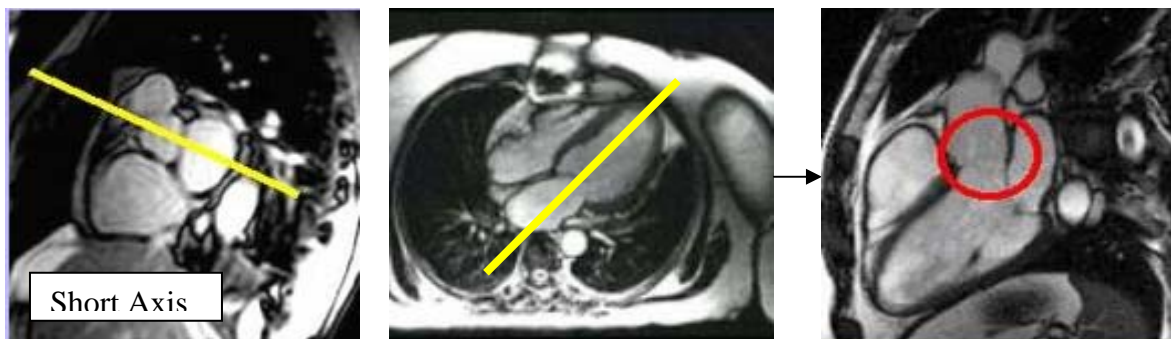
Short Axis



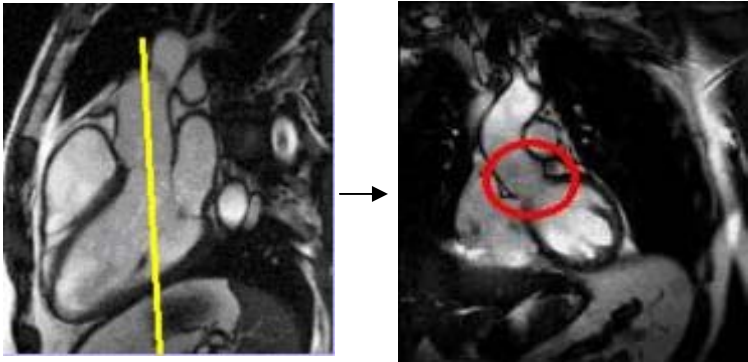
4 Chambers view



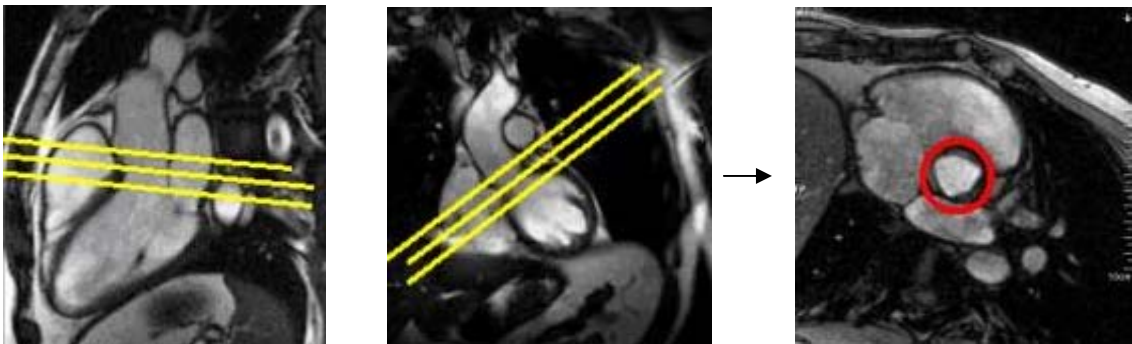
Left Ventricular Outflow Track (for Aortic views)



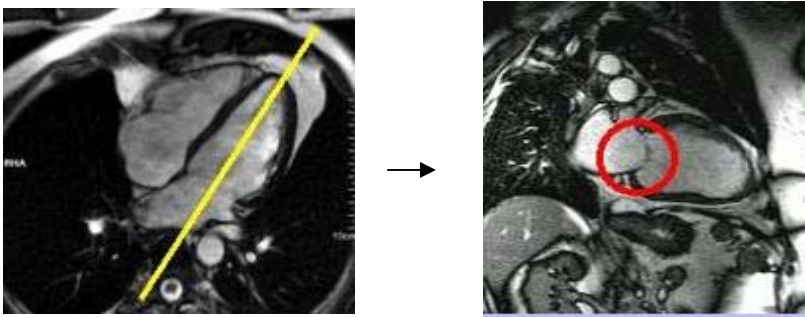
Left Ventricular Outflow track CORONAL (for Aortic views)



Aortic Valves AXIALS (Do both : Cine trufi & Cine Phase contrast)



Mitral Valve views



Right Ventricular Outflow Track (slice through pulmonary trunk)

