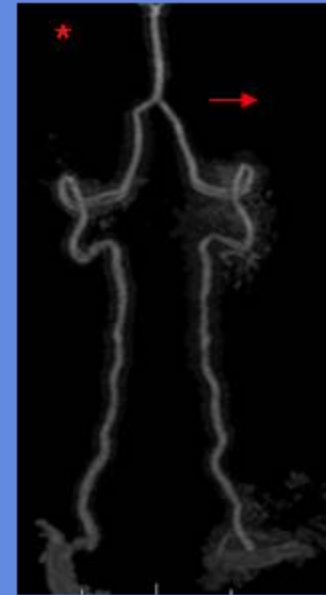
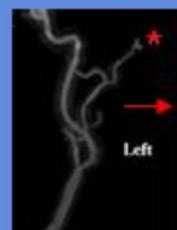
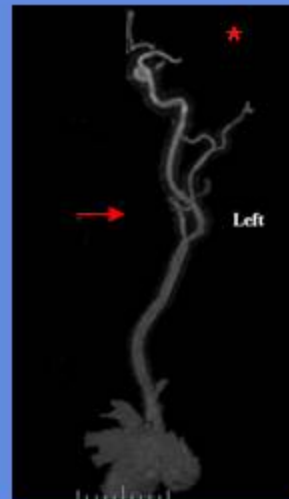
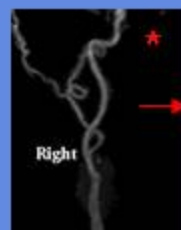
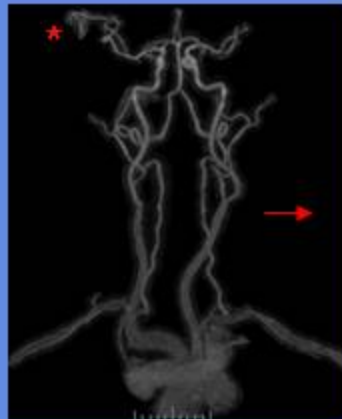
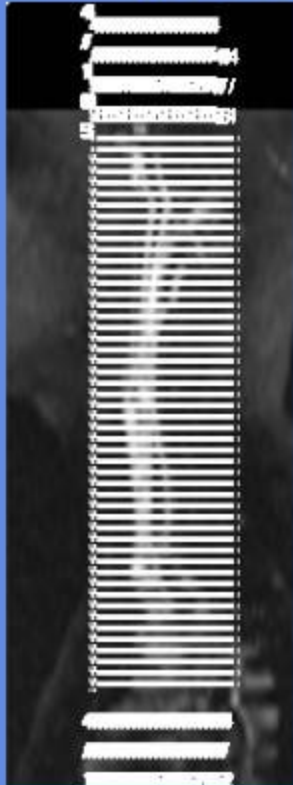


CAROTID ANGIO IMAGE

CLINICAL INDICATIONS:		Aneurysm, TIA's, CVA, H/A's					
parameter	SERIES 1	SERIES 2	SERIES 3	SERIES 4	SERIES 5	SERIES 6	SERIES 7
description	3-PLN LOC	Pre AX	ceMRA				
entry	supine	supine	supine				
position	head first	head first	head first				
coil	NV	NV	NV				
plane	3-PLN	AXIAL	CORONAL				
pulse seq.	FGRE	3D Vasc TOF SPGR	3D Vasc TOF SPGR				
im options		FC,VB,Z2	EDR,Z2,Z512,FTr				
PSD Name							
Te			6.9 Min				
TR			30				
TI							
flip angle			20	35			
ETL							
RBW			15	62			
SATS							
FOV	25	20	28				
slice thick	5	2.4	1.4				
spacing	5	0	0				
F Phase	256	256	256				
P Phase	128	128	192				
NEX	1	1	1				
Phase FOV	1	0.81	0.9				
FREQ DIR		R/L	S/I				
COVERAGE	NECK	CAROTIDS	CAROTIDS				
contrast			1mmol/kg				
comments:							

CAROTID ANGIO

Coronal ceMRA



- * Label right and left
On carotid MIPs.
Also rotate →
23 slices for each
Group, should have 6
Groups.