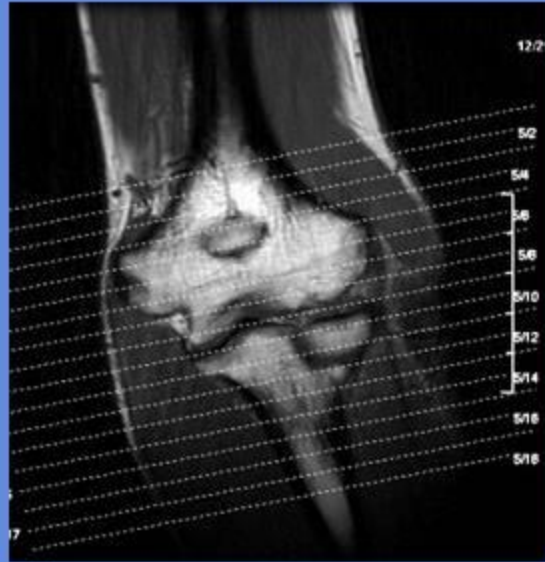


ELBOW

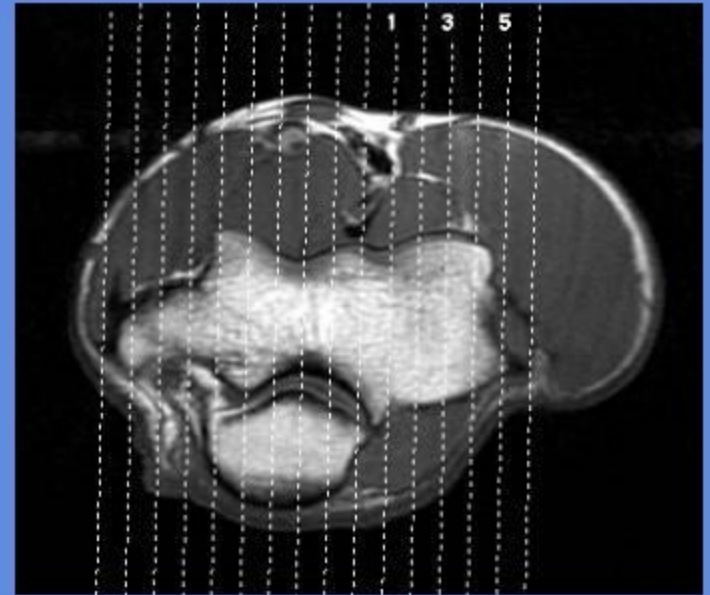
CLINICAL INDICATIONS:		Soft tissue abnormalities involving the tendons, ligaments, and muscles include rupture of the biceps and/or triceps tendons, the LCL or MCL, and									
parameter	SERIES 1	SERIES 2	SERIES 3	SERIES 4	SERIES 5	SERIES 6	SERIES 7	SERIES 8	SERIES 9	SERIES 10	SERIES 11
description	3-PLN LOC	T1 AX	GRE AX	T2 AX	T1 SAG	STIR SAG	T1 COR	STIR COR	3D T1 COR	T1 COR OR SAG FS C+	T1 AX FS C+
entry	Prone	Prone	Prone	Prone	Prone	Prone	Prone	Prone	Prone	supine	supine
position	head first	head first	head first	head first	head first	head first	head first	head first	head first	head first	head first
coil	SMEXTPA	SMEXTPA	SMEXTPA	SMEXTPA	SMEXTPA	SMEXTPA	SMEXTPA	SMEXTPA	SMEXTPA	TORSO PA	TORSO PA
plane	3-PLN	AXIAL	AXIAL	AXIAL	SAGITTAL	SAGITTAL	CORONAL	CORONAL	CORONAL	COR OR SAG	AXIAL
pulse seq.	FGRE	FSE-XL	GRE AX	frFSE-XL	FSE-XL	STIR	FSE-XL	STIR	fSPGR	fSPGR	fSPGR
im options		NP,VB,EDR,TRF	FC,NP,VB,EDR	NP,VB,EDR,TRF,Z512	NP,VB,EDR,TRF,Z512	NP,VB,TRF,Z512	NP,VB	NP,VB,TRF	NP,Z2,Z512	EDR,Z512	EDR,Z512
PSD Name				FSEC							
Te		15	20	85	Min-Full	50	Min-Full	50	Min	OUT-OF-PHASE	OUT-OF-PHASE
TR		400	775	2825	400	4300	667	4300		150	150
TI						150		150			
flip angle									10	90	90
ETL		4		27	4	8	2	8			
RBW		16	16	16	16	22	26	22	12	31	31
SATS		S(LorR)I	S(LorR)I	S(LorR)I F	S(LorR)I	S(LorR)I	S(LorR)I	S(LorR)I	FAT(special)	FAT(special) S,I	FAT(special) S,I
FOV	25	16	16	16	16	18	14	14	12	14	16
slice thick	5	4	4	4	4	4	3	3	2	3	4
spacing	5	1	1	1	1	1	0.5	0.5		0.5	1
F Phase	256	320	320	256	256	256	320	256	256	256	256
P Phase	128	192	192	192	192	192	129	192	192	192	192
NEX	1	2	2	4	2	3	2	3	3	3	3
Phase FOV	1	1	1	1	1	1	1	1	1	1	1
FREQ DIR		R/L	R/L	R/L	S/I	S/I	S/I	S/I	S/I	S/I	S/I
COVERAGE	ELBOW	ELBOW	ELBOW	ELBOW	ELBOW	ELBOW	ELBOW	ELBOW	ELBOW	ELBOW	ELBOW
contrast										1mmol/kg	1mmol/kg
comments:	Place marker on ROI IF CONTRAST										

ELBOW

AXIAL



SAGITTAL



CORONAL

