

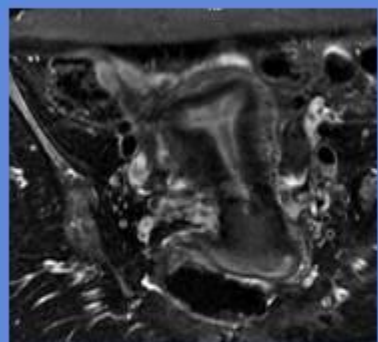
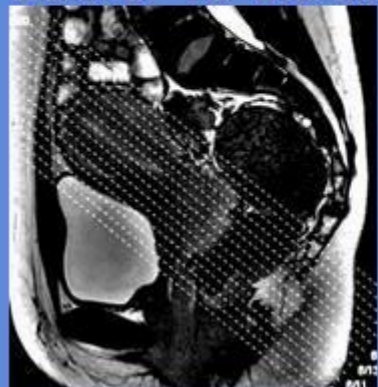
# Endometrial/Cervical Cancer Do not image between days 1-8 of menstrual cycle. Ensure not experiencing signs of menstruation.

CLINICAL INDICATIONS:									
parameter	SERIES 1	SERIES 2	SERIES 3	SERIES 5	SERIES 6	SERIES 7	SERIES 8	SERIES 9	SERIES 10
description	3-PLN LOC	T2 SAG	T1 AX	T2 SHORT (AX)	T2 LONG (COR)	LAVA Axial	LAVA Axial FS C+	FS C+ SAG	LAVA T1 AX FS C+
entry	supine	supine	supine	supine	supine	supine	supine	supine	supine
position	Feet First	Feet First	Feet First	Feet First	Feet First	Feet First	Feet First	Feet First	Feet First
coil	TORSO	TORSO	TORSO	TORSO	TORSO	TORSO	TORSO	TORSO	TORSO
plane	3-PLN	SAGITTAL	AXIAL	OBL	OBL	AXIAL	AXIAL	AXIAL	SAGITTAL
pulse seq.	FGRE	frFSE-XL	Spin Echo	frFSE-XL	frFSE-XL	Vasc TOF SPGR	Vasc TOF SPGR	fSPGR	Vasc TOF SPGR
im options		EDR,TRF,VB	RC,NP,EDR	VB,EDR,TRF	VB,EDR,TRF	EDR,Z2	EDR,Z2,mPh	EDR	EDR,Z2,mPh
PSD Name		FSEC							
Te		104	12	126	126	Min	Min	out-of-phase	Min
TR		4050	400	6017	6017	prep 39	prep 39	160	prep 39
TI									
flip angle						15	15	90	15
ETL		17		25	25				
RBW		32		32	32			31	31
SATS		S,I	S,I,FAT			FAT	FAT	FAT,S,I	FAT
FOV	48	26	24	24	24	26	26	44	26
slice thick	5	4	5.5	4	4	7	7	6	7
spacing	5	1	INTERLEAVE	1	1	0	0	1	0
						38 locs	38 locs		38 locs
F Phase	256	320	320	320	320	256	256	384	256
P Phase	128	160	160	160	160	128	128	192	128
NEX	1	4	1.5	5	5	4	4	1	4
Phase FOV	1	1	1	1	1	1	1	0.8	1
FREQ DIR		S/I	S/I	S/I	S/I	R/L	R/L	R/L	R/L
COVERAGE							3 PHASES		
contrast							1mmol/kg		1mmol/kg
Series Descripto									
comments:	<p>30 SEC. Scan delay after start of injection no pause between phases</p> <p style="color: red;">Glucagon: 1mg IM administered 5 to10 minutes prior to procedure</p>								

# UTERUS

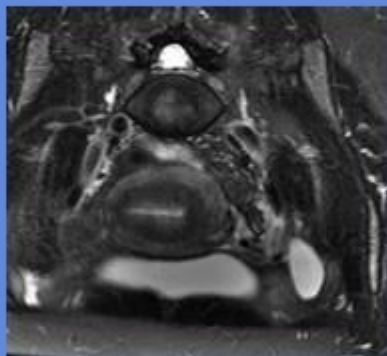
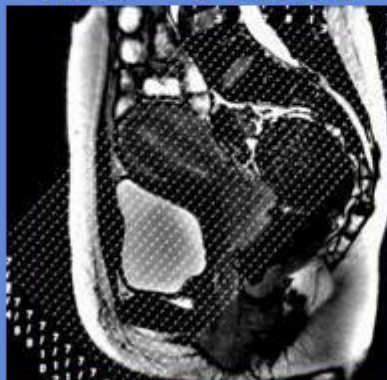
long AXIS

Coronal TO Uterus

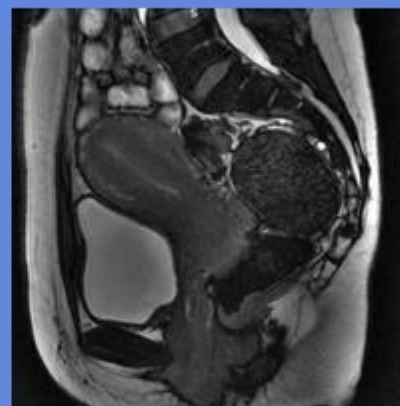
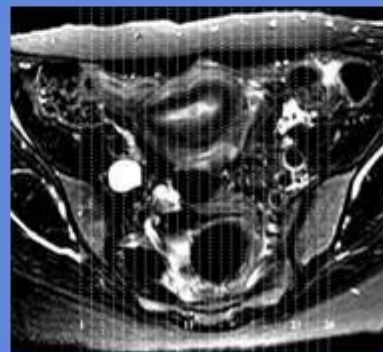


Short AXIS

Axial TO Uterus



Sagittal



Axial

