

# FORE-FOOT

FORE-FOOT							
CLINICAL INDICATIONS:		FX,AVN,Ligament Injuries					
parameter	SERIES 1	SERIES 2	SERIES 3	SERIES 4	SERIES 5	SERIES 6	
description	T1 AX	T2 AX FS	T1 COR	PD COR FS	T1 SAG	STIR SAG	
entry	supine	supine	supine	supine	supine	supine	
position	Feet First	Feet First	Feet First	Feet First	Feet First	Feet First	
coil	Chimney	Chimney	Chimney	Chimney	Chimney	Chimney	
plane	AXIAL	AXIAL	CORONAL	CORONAL	SAGITTAL	SAGITTAL	
pulse seq.	FSE-XL	FRFSE	FSE-XL	FSE-XL	FSE-XL	STIR	
im options	VB,TRF,Z512	VB,TRF,Z512	VB,TRF,Z512	VB,TRF,Z512	VB,TRF,Z512,NP	VB,TRF,Z512,NP	
PSD Name		FSEC		FSE C			
Te	Min-Full	102	12	34	Min-Full	34	
TR	550	3850	750	2500	450	6000	
TI							
flip angle							
ETL	3	8	4	4	2	18	
RBW	41	32	32	32	21	32	
SATS	S,I	FAT S,I	S,I	FAT S,I	S,I	S,I	
FOV	16	16	16	16	15	15*	
slice thick	4	4	3.5	3.5	3.5	3.5	
spacing	1	1	1	1	0.7	0.7	
F Phase	320	320	320	320	320	256	
P Phase	192	128	192	160	160	160	
NEX	4	3	4	4	4	4	
Phase FOV	0.75	0.75	0.75	0.75	1	1	
FREQ DIR	A/P	A/P	S/I	S/I	S/I	S/I	
COVERAGE	FORE FOOT	FORE FOOT	FORE FOOT	FORE FOOT	FORE FOOT	FORE FOOT	
contrast							
	Navicular	Navicular	Ant. Metatarsals	Ant. Metatarsals	Metatarsal	Metatarsal	
COVERAGE	to	to	to	to	to	to	
	Proximal Phalanges	Proximal Phalanges	Plantar fascia	Plantar fascia	Metatarsal	Metatarsal	

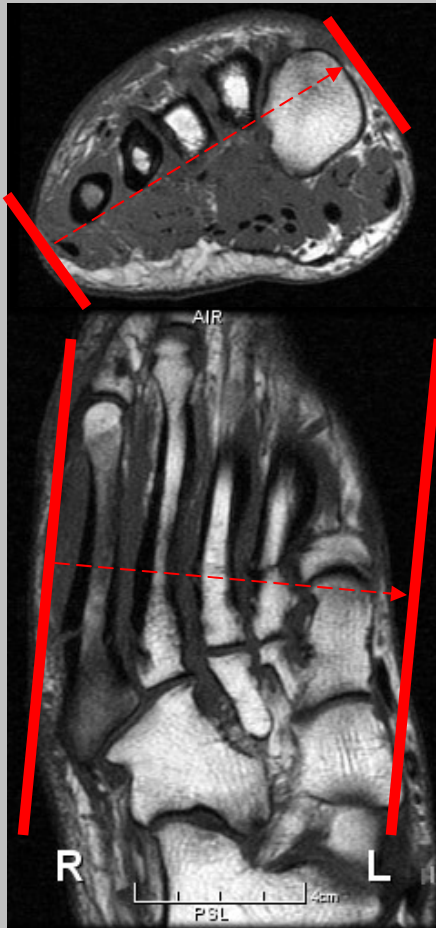
- Contrast : If clinical concern is for :
1. Infection \* On STIR increase FOV to 24 to include *hind-foot*
  2. Oseto \* On STIR increase FOV to 24 to include *hind-foot*
  3. Morton's Neuroma

(T1 weighted FatSat 3 Planes)

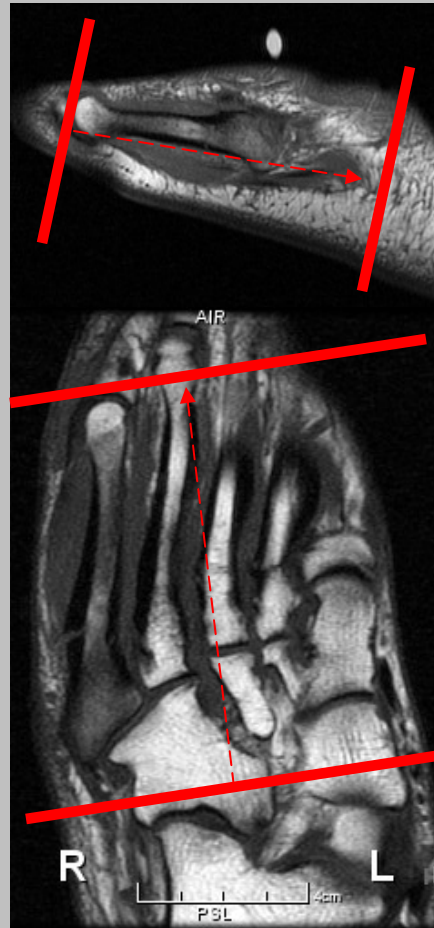


# FORE-FOOT

Sagittal



Axial



Coronal

