

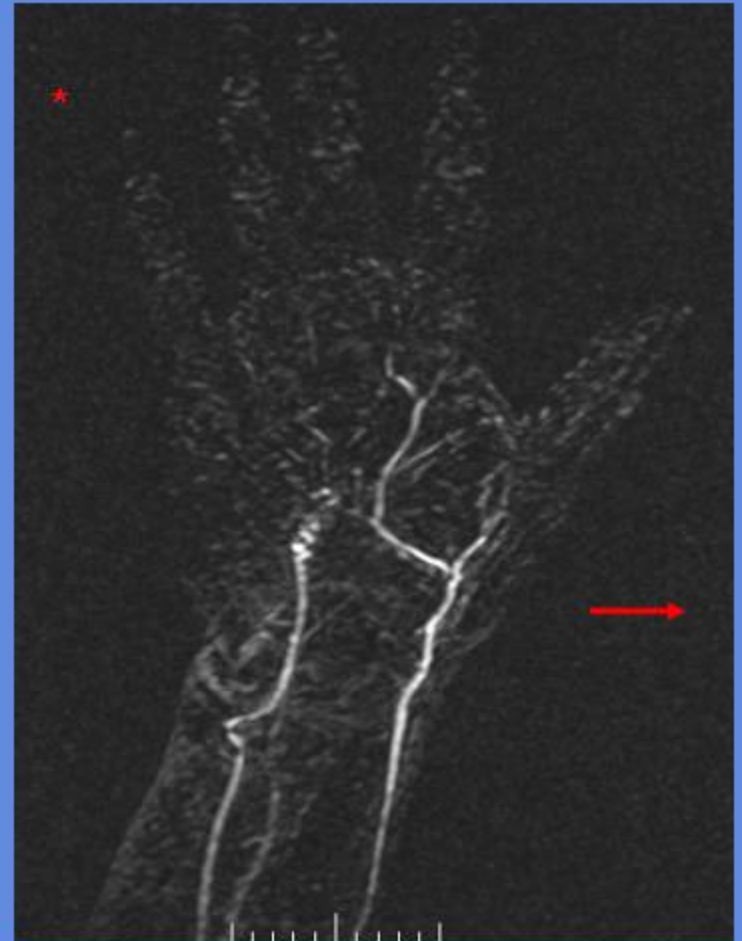
HAND ceMRA

IMAGE

CLINICAL INDICATIONS:		Aneurysm, Numbness					
parameter	SERIES 1	SERIES 2	SERIES 3	SERIES 4	SERIES 5	SERIES 6	SERIES 7
description	3-PLN LOC	ceMRA					
entry	supine	supine					
position	head first	head first					
coil	HEAD	HEAD					
plane	3-PLN	CORONAL					
pulse seq.	FGRE	3D Vasc TOF SPGR					
im options		EDR,Z2,Z512,FTr					
PSD Name							
Te		Min					
TR							
TI							
flip angle			35				
ETL							
RBW			62				
SATS							
FOV	25	32					
slice thick	5	2					
spacing	5	0					
F Phase	256	256					
P Phase	128	160					
NEX	1	1					
Phase FOV	1	1					
FREQ DIR		S/I					
COVERAGE	HAND	HAND					
contrast		1mmol/kg					
comments:							

HAND ceMRA

CORONAL



* Rotate 23 slices for each Group