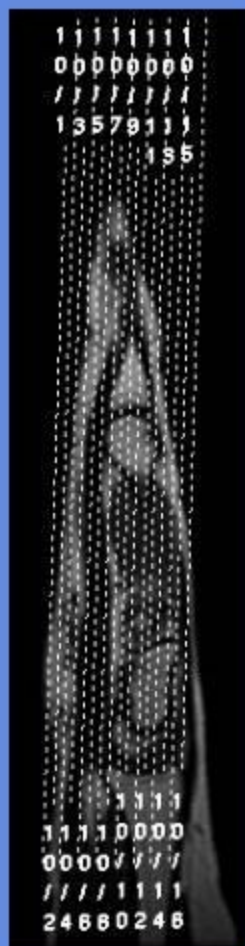


HAND

| CLINICAL INDICATIONS: trauma, tumour, arthropathies, infection, avascular necrosis | | | | | | | | | | |
|--|--|------------|------------|------------|------------|------------|------------|--------------|---------------------|--------------|
| parameter | SERIES 1 | SERIES 2 | SERIES 3 | SERIES 4 | SERIES 5 | SERIES 6 | SERIES 7 | SERIES 8 | SERIES 9 | SERIES 10 |
| description | 3-PLN LOC | T1 COR | STIR COR | T1 SAG | T1 AX | GRE AX | T2 AX FS | T1 3D COR | T1 COR OR SAG FS C+ | T1 AX FS C+ |
| entry | Prone | Prone | Prone | Prone | Prone | Prone | Prone | Prone | Prone | Prone |
| position | head first | head first | head first | head first | head first | head first | head first | head first | head first | head first |
| coil | 8ch Head | 8ch Head | 8ch Head | 8ch Head | 8ch Head | 8ch Head | 8ch Head | 8ch Head | 8ch Head | 8ch Head |
| plane | 3-PLN | CORONAL | CORONAL | SAGITTAL | AXIAL | AXIAL | AXIAL | CORONAL | COR OR SAG | AXIAL |
| pulse seq. | FGRE | Spin Echo | STIR | Spin Echo | Spin Echo | GRE | FRFSE | fSPGR | fSPGR | fSPGR |
| im options | | EDR | NP,TRF,VB | EDR | EDR | EDR | TRF,VB | EDR,Z2,Z512 | EDR,Z512 | EDR,Z512 |
| PSD Name | | | | | | | FSEC | | | |
| Te | | Min | 50 | Min | Min | 20 | 85 | Min | OUT-OF-PHASE | OUT-OF-PHASE |
| TR | | 500 | 4400 | 500 | 500 | 750 | 2800 | | 150 | 150 |
| TI | | | 150 | | | | | | | |
| flip angle | | | | | | 20 | | 10 | 90 | 90 |
| ETL | | | 14 | | | | 21 | | | |
| RBW | | 16 | 32 | 16 | 16 | 16 | 27 | 12 | 31 | 31 |
| SATS | | S/I | S/I | S/I | S/I | S/I | S/I, FAT | FAT(special) | FAT(special) | FAT(special) |
| FOV | 25 | 24 | 24 | 24 | 20 | 20 | 20 | 18 | 24 | 20 |
| slice thick | 5 | 2 | 2 | 2 | 4 | 4 | 4 | 1.6 | 2 | 4 |
| spacing | 5 | 0.3 | 0.3 | 0.3 | 1 | 1 | 1 | | 0.3 | 1 |
| F Phase | 256 | 384 | 256 | 384 | 320 | 320 | 256 | 256 | 256 | 256 |
| P Phase | 128 | 224 | 192 | 224 | 192 | 192 | 160 | 192 | 192 | 192 |
| NEX | 1 | 3 | 3 | 3 | 3 | 2 | 6 | 3 | 3 | 3 |
| Phase FOV | 1 | 1 | 1 | 1 | 0.75 | 0.75 | 0.75 | 1 | 1 | 1 |
| FREQ DIR | | S/I | S/I | S/I | R/L | R/L | R/L | Uuswap | S/I | S/I |
| COVERAGE | HAND | HAND | HAND | HAND | HAND | HAND | HAND | HAND | HAND | HAND |
| contrast | | | | | | | | | 1mmol/kg | 1mmol/kg |
| comments: | Place marker on ROI IF CONTRAST INDICATED: RUN SERIES 9 AND 10 | | | | | | | | | |

HAND

CORONAL



AXIAL



SAGITTAL

