

HUMERUS

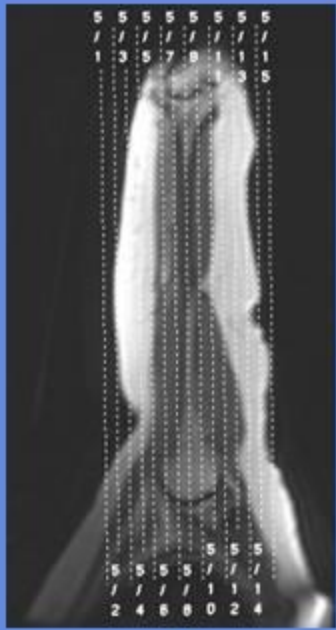
CLINICAL INDICATIONS:

Pain ,Soft Tissue Mass, Muscle tear

parameter	SERIES 1	SERIES 2	SERIES 3	SERIES 4	SERIES 5	SERIES 6	SERIES 7	SERIES 8	SERIES 9	SERIES 10	SERIES 11	SERIES 12	SERIES 13
description	3-PLN LOC	STIR SAG	T1 SAG	STIR COR	T1 COR	T1 AX	GRE AX	STIR AX	T1 AX(THIN)	GRE AX(THIN)	STIR AX(THIN)	T1 COR FS C+	T1 AX FS C+
entry	supine	supine	supine	supine	supine	supine	supine	supine	supine	supine	supine	supine	supine
position	head first	head first	head first	head first	head first	head first	head first	head first	head first	head first	head first	head first	head first
coil	TORSO PA	TORSO PA	TORSO PA	TORSO PA	TORSO PA	TORSO PA	TORSO PA	TORSO PA	TORSO PA	TORSO PA	TORSO PA	TORSO PA	TORSO PA
plane	3-PLN	SAGITTAL	SAGITTAL	CORONAL	CORONAL	AXIAL	AXIAL	AXIAL	AXIAL	AXIAL	AXIAL	CORONAL	AXIAL
pulse seq.	FGRE	STIR	FSE-XL	STIR	FSE-XL	FSE-XL	GRE	STIR	FSE-XL	GRE	STIR	fSPGR	fSPGR
im options		NP,VB,SEQ,EDR,TRF	NP,VB,EDR,TRF	NP,VB,SEQ,EDR,TRF	NP,VB,EDR,TRF	NP,VB,TRF	FC,NP,VB	NP,VB,SEQ,Z512,TRF	NP,VB,TRF	FC,NP,VB	NP,VB,SEQ,Z512,TRF	EDR,Z512	EDR,Z512
PSD Name													
Te		34	8	34	8	Min Full	20	34	Min Full	20	34	OUT-OF-PHASE	OUT-OF-PHASE
TR		6500	400	6500	400	600	651	5700	600	651	5700	150	150
TI		150		150				150			150		
flip angle							20			20		90	90
ETL		18	4	18	4	2		18	2		18		
RBW		21	31	21	31	22	27	21	22	27	21	31	31
SATS		S I	S I	S I	S I	S I	S I	S I	S I	S I	S I	FAT(special)	FAT(special)
FOV	48	40	40	40	40	20	20	20	20	20	20	24	20
slice thick	5	5	5	5	5	10	10	10	5	5	5	2	4
spacing	5	1	1	1	1	1	3	3	1	1	1	0.3	1
F Phase	256	320	512	320	512	320	384	256	320	320	256	256	256
P Phase	128	224	320	224	320	256	224	192	256	192	160	192	192
NEX	1	2	3	2	3	2	1.5	2	4	2	3	3	3
Phase FOV	1	1	1	1	1	1	1	1	1	1	1	1	1
FREQ DIR		A/P	A/P	R/L	R/L	R/L	R/L	R/L	R/L	R/L	R/L	S/I	S/I
COVERAGE		HUMERUS	HUMERUS	HUMERUS	HUMERUS	ROI	ROI	ROI	ROI	ROI	ROI	HUMERUS	ROI
contrast												1mmol/kg	1mmol/kg

comments: If ROI is small,thin do thin axials Place marker on ROI IF CONTRAST

HUMERUS



← SAGITTAL

AXIALS THUR ROI

