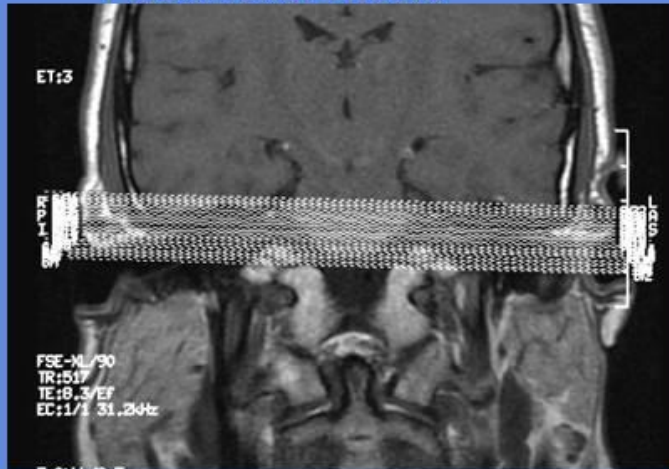


IAC'S

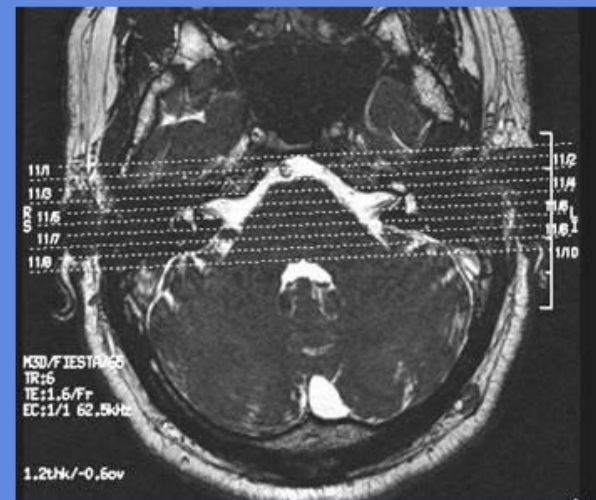
CLINICAL INDICATIONS:						
parameter description	3-PLN LOC	T2 AX	3D Fiesta AX	T1 COR	T1 COR C+	T1 AX C+
entry	supine	supine	supine	supine	supine	supine
position	head first	head first	head first	head first	head first	head first
coil	Head	Head	Head	Head	Head	Head
plane	3-PLN	AXIAL	AXIAL	CORONAL	CORONAL	AXIAL
pulse seq.	FGRE	FSE-XL	Fiesta C	spin echo	spin echo	spin echo
im options		VB, ZIP512,NP	VB, ZIP512,NP	VB, ZIP512,NP	VB, ZIP512,NP	VB, ZIP512,NP
PSD name						
Te		85	Min	Min	Min	Min
TR		3000	Min	400	400	400
TI						
flip angle						
ETL						
RBW		31	83	31	31	31
SATS		S,I	S,I	S,I	S,I	S,I
FOV	25	18	18	18	18	18
slice thick	5	3	1	3	3	3
spacing	5	0.3		0.3	0.3	0.3
F Phase	256	320	320	256	256	256
P Phase	128	320	320	192	192	192
NEX	1	3	1	4	4	4
Phase FOV	1	1	1	1	1	1
FREQ DIR		S/I	S/I	S/I	S/I	S/I
COVERAGE	BRAIN	IAC'S	IAC'S	IAC'S	IAC'S	IAC'S
contrast				1mmol/kg	1mmol/kg	1mmol/kg

IAC'S

Fiesta Axial offsets



T1 Coronal offsets



T2 Axial offsets

