

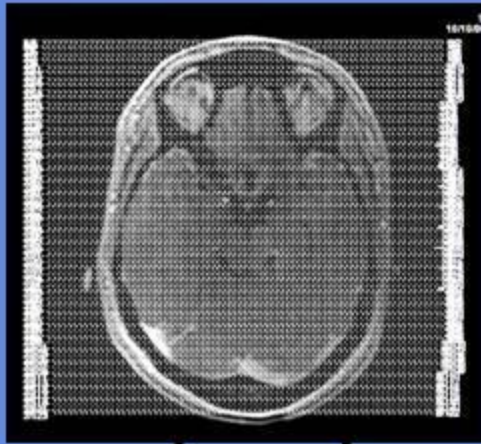
MRV

CLINICAL INDICATIONS: Sagittal Sinus Thrombosis

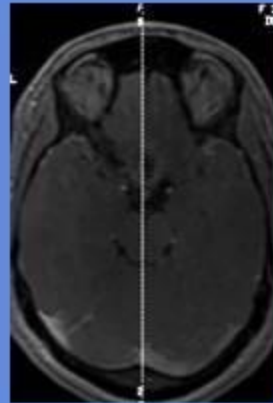
parameter	SERIES 1	SERIES 2	SERIES 3	SERIES 4	SERIES 5	SERIES 6	SERIES 7
description	3-PLN LOC	MRV	MRV	MRV			
entry	supine	supine	supine	supine			
position	head first	head first	head first	head first			
coil	HEAD	HEAD	HEAD	HEAD			
plane	3-PLN	OBL. SAG	CORONAL	AXIAL			
pulse seq.	FGRE	2D Vasc PC	2D Vasc TOF SPGR	3D Vasc PC			
im options		FC, Seq	FC, Seq,VB	FC			
PSD name							
Te			Min				
TR		33	Min	25			
TI							
flip angle		20	50	20			
ETL							
RBW		15	15	15			
SATS			1				
FOV	25	24	22	22			
slice thick	5	50	1.5	1.5			
spacing	5	0	0	0			
		venc. 20 cm/sec		venc. 60 cm/sec			
F Phase	256	256	256	256			
P Phase	128	256	128	128			
NEX	1	4	1	1			
Phase FOV	1	1	0.75	0.75			
FREQ DIR		S/I	S/I	A/P			
COVERAGE	BRAIN	Sag Sinus	ENTIRE SKULL	TENTORIUM			
contrast							
comments:	If no previous MRI do T1 and T2 Axials						

MRV

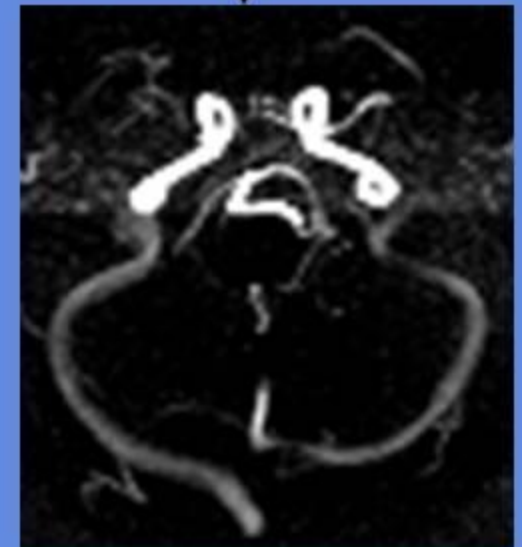
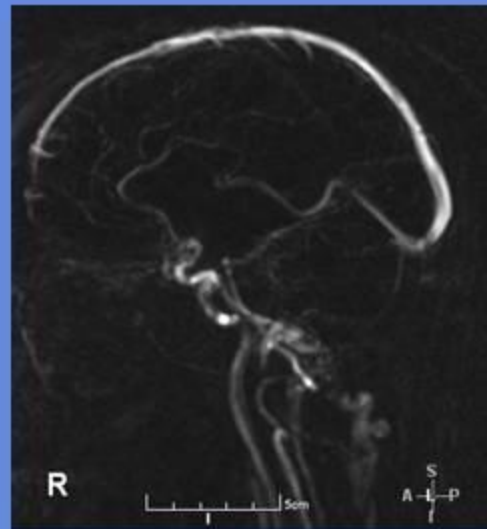
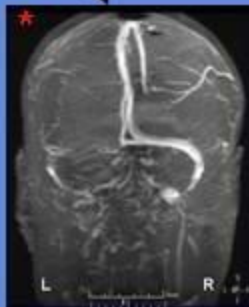
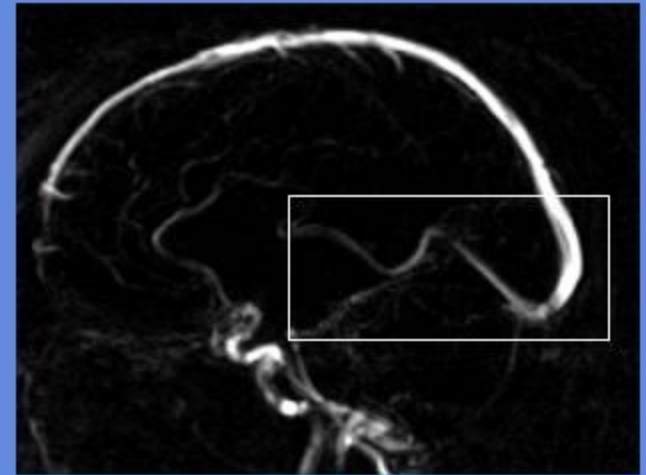
Coronal TOF



2D PC SAG



3D PC AX



* Twist 23 slices for each Group