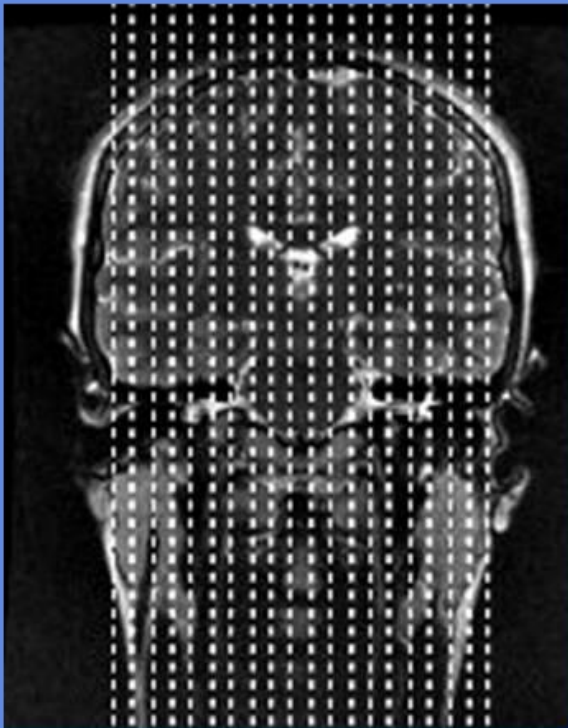


# M.S.

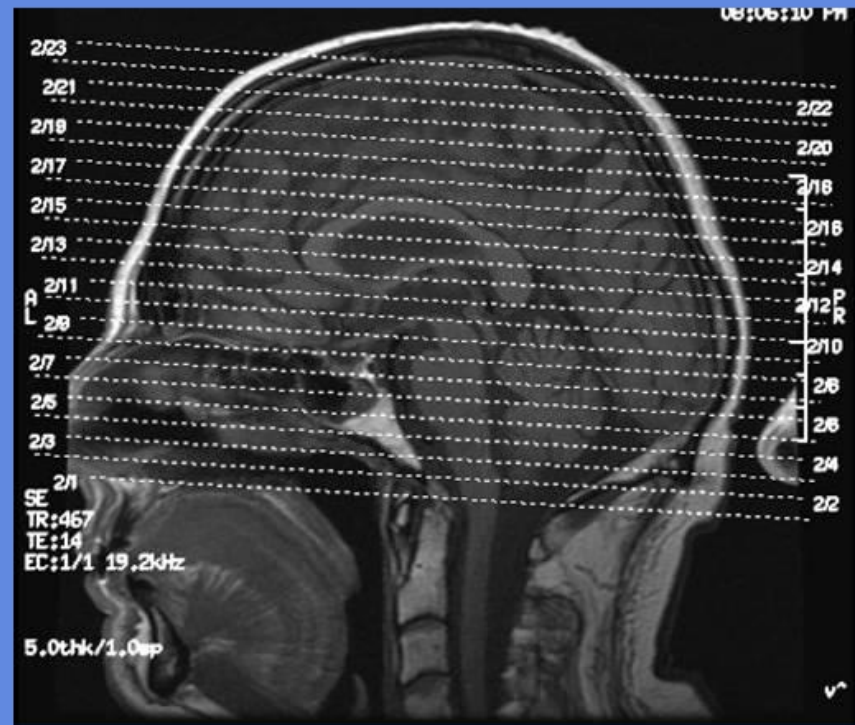
CLINICAL INDICATIONS: M.S.

parameter								
description	3-PLN LOC	FLAIR SAG	T1 SAG	DWI AX	T2 AX	GRE AX	FLAIR AX	T1 C+
entry	supine	supine	supine	supine	supine	supine	supine	supine
position	head first	head first	head first	head first	head first	head first	head first	head first
coil	Head	Head	Head	Head	Head	Head	Head	Head
plane	3-PLN	SAGITTAL	SAGITTAL	AXIAL	AXIAL	AXIAL	AXIAL	AXIAL
pulse seq.	FGRE	flair CUBE	spin echo	EPI	FRFSE / PROP	EPI	T2flair PROP	spin echo
im options		EDR, ZIP512,VB	EDR,ZIP512	DIFF	TRF,ZIP512,FC	TRF,ZIP512,FC	TRF,ZIP512,FC	EDR, ZIP512
PSD name								
Te		140	Min Full	Min	102	140	25	Min Full
TR		9000	475	8000	4500	9000	9000	550
TI		2200				2200		
flip angle								
ETL					13			
RBW		20	20		41	20	20	20
SATS								
FOV	25	23	23	24	24	24	24	24
slice thick	5	2	5	5	5	5	3	5
spacing	5	-1	1	1	1	1	-1	1
F Phase	256	320	320	128	320	320	256	320
P Phase	128	320	192	128	192	224	416	192
NEX	1	1	1	2	1	1	1	1
Phase FOV	1	1	1	1	1	1	1	1
FREQ DIR		S/I	S/I	R/L	A/P	A/P	A/P	A/P
COVERAGE	BRAIN	BRAIN	BRAIN	BRAIN	BRAIN	BRAIN	BRAIN	BRAIN
contrast								1mmol/kg
comments:	Cancer patients run T1 POST all 3 planes							

# M.S.



Sagittal offsets



Axial offsets