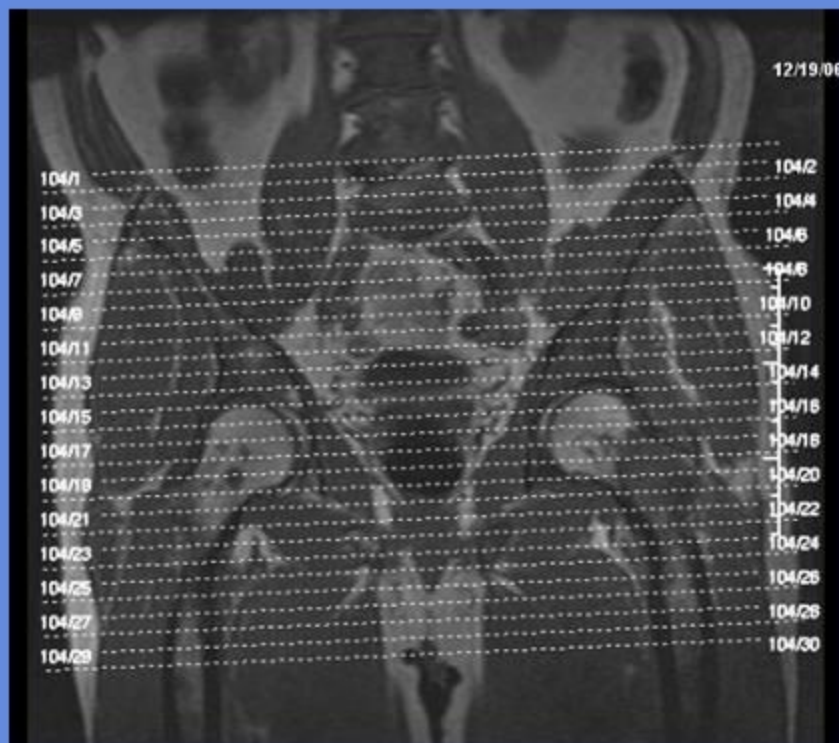


PELVIS

CLINICAL INDICATIONS:		PAIN,FX,AVN.Arthritis,Tendonitis					
parameter	SERIES 1	SERIES 2	SERIES 3	SERIES 4	SERIES 5	SERIES 6	SERIES 7
description	3-PLN LOC	T1 COR PELVIS	STIR COR PELVIS	STIR AX	T1 AX	T1 AX FS C+	T1 COR FS C+
entry	supine	supine	supine	supine	supine	supine	supine
position	head first	Feet First	Feet First	Feet First	Feet First	Feet First	Feet First
coil	CTLBOT	TORSOPA	TORSOPA	TORSOPA	TORSOPA	TORSOPA	TORSOPA
plane	3-PLN	CORONAL	CORONAL	AXIAL	AXIAL	AXIAL	CORONAL
pulse seq.	FGRE	Spin Echo	STIR	STIR	Spin Echo	fSPGR	fSPGR
im options		VB,TRF,Z512,SCIC	VB,TRF,Z512,SCIC	VB,TRF,Z512,SCIC	VB,TRF,Z512,SCIC	EDR	EDR
PSD Name							
Te		Min-Full	34	34	Min-Full	out-of-phase	out-of-phase
TR		450	5000	5000	450	150	160
TI			150	150			
flip angle						90	90
ETL			29				
RBW		32	32	32	32	31	31
SATS		S,I	S,I	S,I	S,I	FAT(special) S,I	FAT(special) S,I
FOV	48	36	36	36	36	36	36
slice thick	5	5	5	5	5	5	5
spacing	5	1	1	1	1	1	1
F Phase	256	512	256	256	384	384	384
P Phase	128	224	160	160	192	192	192
NEX	1	2	4	5	2	1	1
Phase FOV	1	1	1	1	1	1	1
FREQ DIR		S/I	S/I	S/I	S/I	R/L	R/L
COVERAGE	PELVIS	PELVIS	PELVIS	PELVIS	PELVIS	PELVIS	PELVIS
contrast						1mmol/kg	1mmol/kg
comments:	IF CONTRAST INDICATED: RUN SERIES 6 AND 7						

PELVIS

AXIAL



CORONAL

