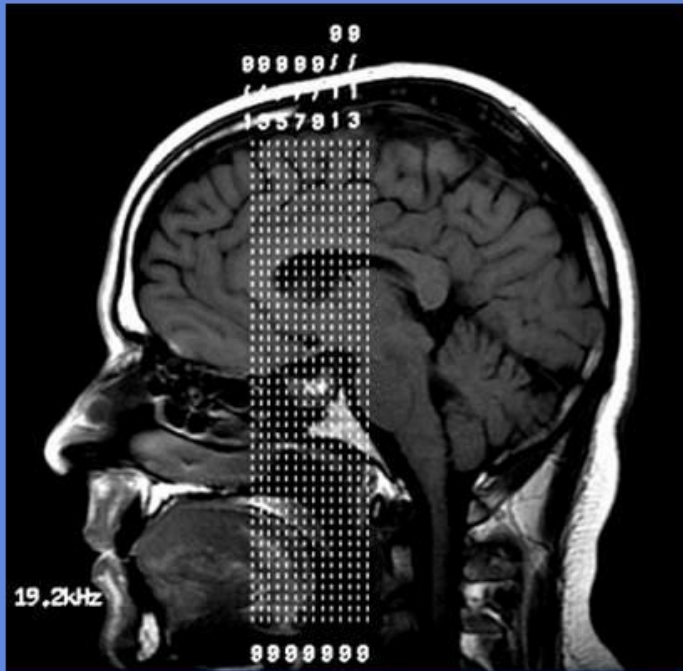


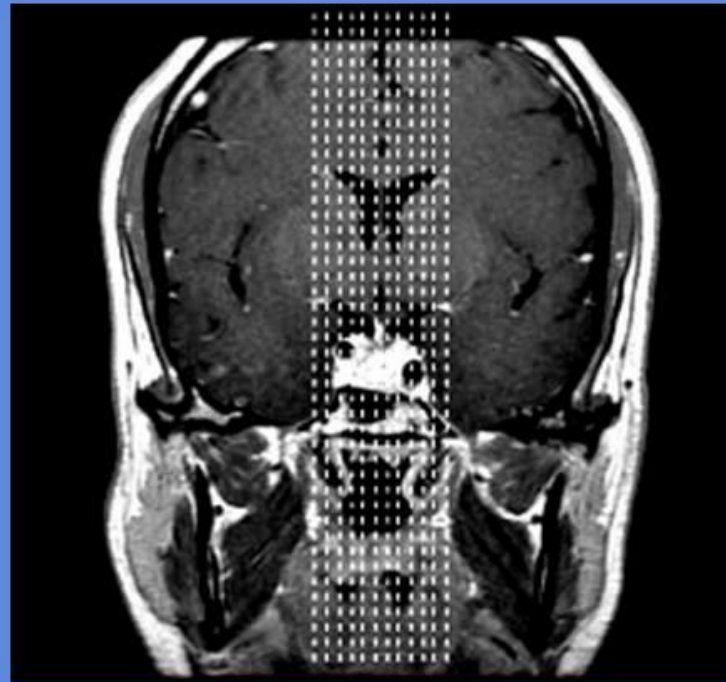
PITUITARY

CLINICAL INDICATIONS:						
parameter description	3-PLN LOC	T1 COR *	T2 COR	T1 COR DYN. C+**	T1 COR C+	T1 SAG C+
entry	supine	supine	supine	supine	supine	supine
position	head first	head first	head first	head first	head first	head first
coil	Head	Head	Head	Head	Head	Head
plane	3-PLN	CORONAL	CORONAL	CORONAL	CORONAL	SAGITTAL
pulse seq.	FGRE	spin echo	FSE-XL	spin echo	spin echo	spin echo
im options						
PSD name						
Te		Min	80-90	Min	Min	Min
TR		400	3000	400	400	400
TI						
flip angle						
ETL						
RBW		16	23	16	16	16
SATS						
FOV	25	18	18	18	18	18
slice thick	5	3	3	3	3	3
spacing	5	0.3	0.3	0.3	0.3	0.3
F Phase	256	320	320	256	320	320
P Phase	128	192	192	128	192	192
NEX	1	2	2	1	2	2
Phase FOV	1	1	1	1	1	1
FREQ DIR		S/I	S/I	S/I	S/I	S/I
COVERA GE	BRAIN	PITUITARY	PITUITARY	PITUITARY	PITUITARY	PITUITARY
contrast				1mmol/kg	1mmol/kg	1mmol/kg

PITUITARY



T1 Coronal offsets



Sagittal offsets