

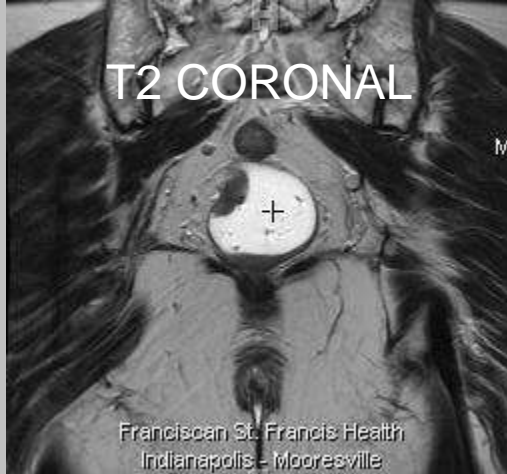
RECTAL CA

CLINICAL INDICATIONS: Rectal CA staging

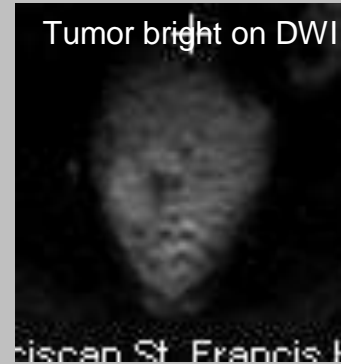
parameter							
description	3-PLN LOC	COR STIR GLOBAL	SAG T2-Prop	AX DWI	AX T2 FS-Prop	COR T2-Prop	Axial Global
entry	supine	supine	supine	supine	supine	supine	supine
position	Feet First	Feet First	Feet First	Feet	Feet First	Feet First	Feet First
coil	12 or 32 ch	12 or 32 ch	12 or 32 ch	12 or 32	12 or 32 ch	12 or 32 ch	12 or 32 ch
plane	3-PLN	CORONAL	SAGITTAL	AXIAL	AXIAL	CORONAL	Axial
pulse seq.	FGRE	STIR	Prop		Prop	Prop	Prop
im options							
PSD Name							
Te		50	85	min	112	112	50
TR		3500	4600	5000	6700	4132	3500
TI		130					
flip angle			90		90	90	90
ETL		11	21	250	23	23	21
RBW		35	31	41	21	25	31
SATS				Special FAT	f		
FOV	48	38-44	19	34	19	19	22
slice thick	5	5	2.0	5	2.0	2.0	5
spacing	5	1	0.5	1	0.5	0.5	0.5
LOCS							
F Phase	256	416	320	128	320	320	320
P Phase	128	256	320	160	224	224	320
NEX	1	1	1	4	4	1	1
Phase FOV	1	1	1	1	1	1	1
FREQ DIR		R/L	S/I	R/L	R/L	R/L	R/L
COVERAGE							
contrast							

comments: Glucagon: 1 mg IM administered 2 minutes prior to procedure

Points of interest



DWI AXIAL



T2 AXIAL



ADC map

