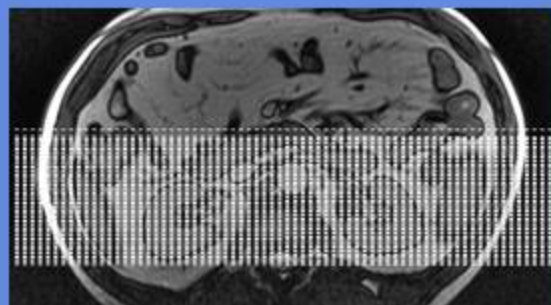


# RENAL ceMRA IMAGE

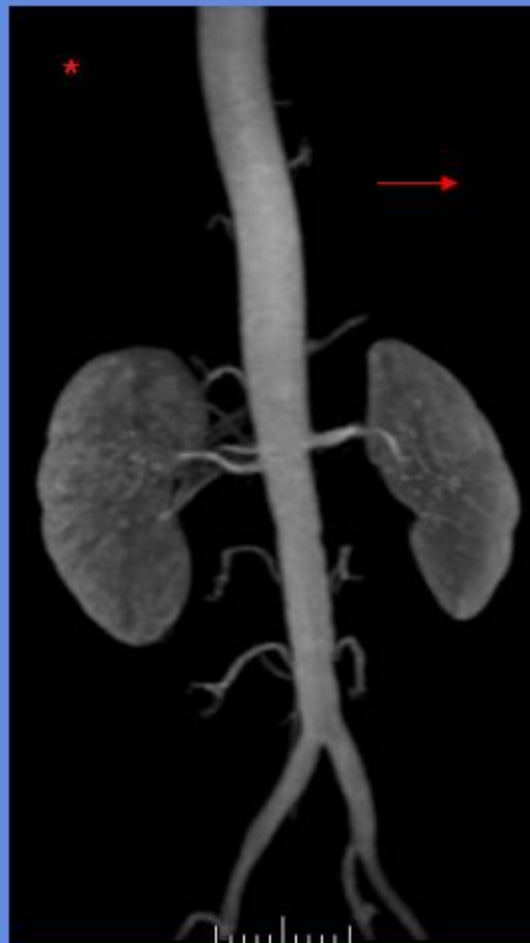
CLINICAL INDICATIONS:		Aneurysm, Hypertension					
parameter	SERIES 1	SERIES 2	SERIES 3	SERIES 4	SERIES 5	SERIES 6	SERIES 7
description	3-PLN LOC	ceMRA	T1 AX FS C+				
entry	supine	supine	supine				
position	Feet First	Feet First	Feet First				
coil	Torso	Torso	TORSO				
plane	3-PLN	CORONAL	AXIAL				
pulse seq.	FGRE	3D Vasc TOF SPGR	fSPGR				
im options		EDR,Z2,Z512,FTr	EDR				
PSD Name							
Te		Min	out-of-phase				
TR			150				
TI							
flip angle		35	90				
ETL							
RBW		62	31				
SATS			FAT,S,I				
FOV	25	28	44				
slice thick	5	1.4	6				
spacing	5	0	1				
F Phase	256	256	384				
P Phase	128	192	192				
NEX	1	1	1				
Phase FOV	1	0.9	0.8				
FREQ DIR		S/I	R/L				
COVERAGE	Abdominal aorta	Renal artery	ABDOMEN				
contrast		1mmol/kg	1mmol/kg				
comments:							

# RENAL ceMRA

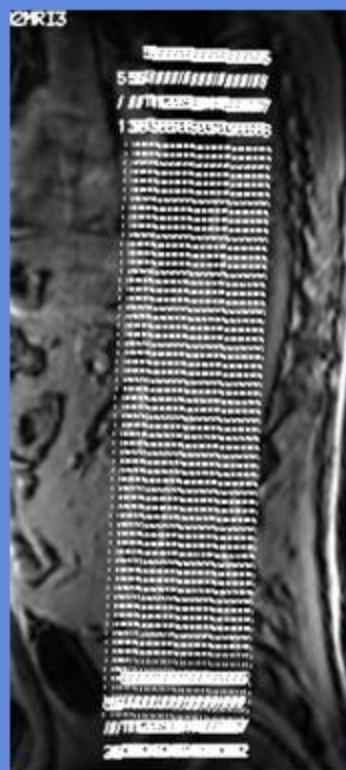
Coronal ceMRA



ceMRA



Axial Post



\* Rotate 23 slices for each Group →