

# SACRUM

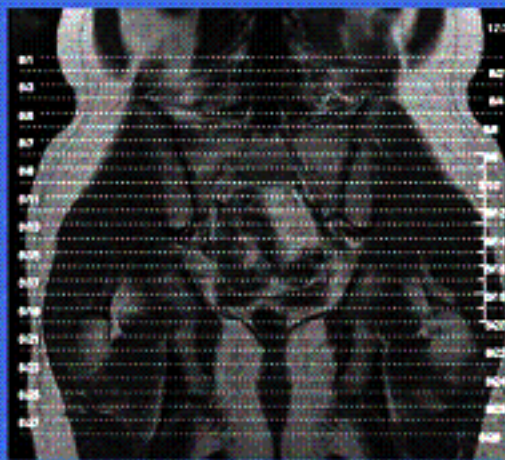
| CLINICAL INDICATIONS: |   | FX, CA , DJD     |                  |                |                |                  |                |                  |                |
|-----------------------|---|------------------|------------------|----------------|----------------|------------------|----------------|------------------|----------------|
| parameter             | SERIES 1  | SERIES 2         | SERIES 3         | SERIES 4       | SERIES 5       | SERIES 6         | SERIES 7       | SERIES 8         | SERIES 9       |
| description           | 3-PLN LOC   | T1 COR PELVIS    | STIR COR PELVIS  | T1 SAG         | T2 FS SAG      | OBL COR STIR     | OBL COR T1     | OBL AX STIR      | OBL AX T1      |
| entry                 | supine  | supine           | supine           | supine         | supine         | supine           | supine         | supine           | supine         |
| position              | feet first  | Feet First       | Feet First       | Feet First     | Feet First     | Feet First       | Feet First     | Feet First       | Feet First     |
| coil                  | torso pa  | TORSOPA          | TORSOPA          | TORSOPA        | TORSOPA        | TORSOPA          | TORSOPA        | TORSOPA          | TORSOPA        |
| plane                 | 3-PLN   | CORONAL          | CORONAL          | SAGITTAL       | SAGITTAL       | OBLIQUE          | OBLIQUE        | OBLIQUE          | OBLIQUE        |
| pulse seq.            | FGRE  | Spin Echo        | STIR             | Spin Echo      | FRFSE-XL       | STIR             | Spin Echo      | STIR             | Spin Echo      |
| im options            |   | VB,TRF,Z512,SCIC | VB,TRF,Z512,SCIC | VB,NP,TRF,Z512 | VB,NP,TRF,Z512 | VB,TRF,Z512,SCIC | VB,NP,TRF,Z512 | VB,TRF,Z512,SCIC | VB,NP,TRF,Z512 |
| PSD Name              |   |                  |                  |                |                |                  |                |                  |                |
| Te                    |   | Min-Full         | 34               | 10             | 104            | 34               | 10             | 34               | 10             |
| TR                    |   | 450              | 5000             | 525            | 3200           | 5000             | 400            | 6500             | 500            |
| TI                    |   |                  | 150              |                |                | 150              |                | 150              |                |
| flip angle            |   |                  |                  |                |                |                  |                |                  |                |
| ETL                   |   |                  |                  |                | 14             | 18               |                | 15               | 3              |
| RBW                   |   | 31.5             | 32               | 15             | 31             | 20               | 15             | 31               | 20             |
| SATS                  |   | S,I              | S,I              | S,I            | S,I F          | S,I              | S,I            | S,I              | S,I            |
| FOV                   | 25  | 36               | 36               | 20             | 20             | 24               | 24             | 24               | 24             |
| slice thick           | 5   | 5                | 5                | 6              | 6              | 6                | 6              | 6                | 6              |
| spacing               | 5   | 1.5              | 1                | 1              | 1              | 1                | 1              | 1                | 1              |
| F Phase               | 256   | 512              | 256              | 256            | 256            | 256              | 256            | 256              | 256            |
| P Phase               | 128   | 224              | 160              | 192            | 160            | 224              | 192            | 128              | 128            |
| NEX                   | 1   | 2                | 5                | 2              | 3              | 2                | 2              | 4                | 3              |
| Phase FOV             | 1   | 1                | 1                | 2              | 3              | 1                | 2              | 1                | 1              |
| FREQ DIR              |   | S/I              | S/I              | S/I            | S/I            | A/P              | A/P            | R/L              | R/L            |
| COVERAGE              | spine   | PELVIS           | PELVIS           | SACRUM         | SACRUM         | SACRUM           | SACRUM         | SACRUM           | SACRUM         |
| contrast              |   |                  |                  |                |                |                  |                |                  |                |
| comments:             | If h/o Cancer inject GADO SPGR FS out-of-phase (AXIAL and Coronal) and thur ROI |                  |                  |                |                |                  |                |                  |                |

# SACRUM

Sagittal



Axial



Coronal

