

SOFT TISSUE NECK

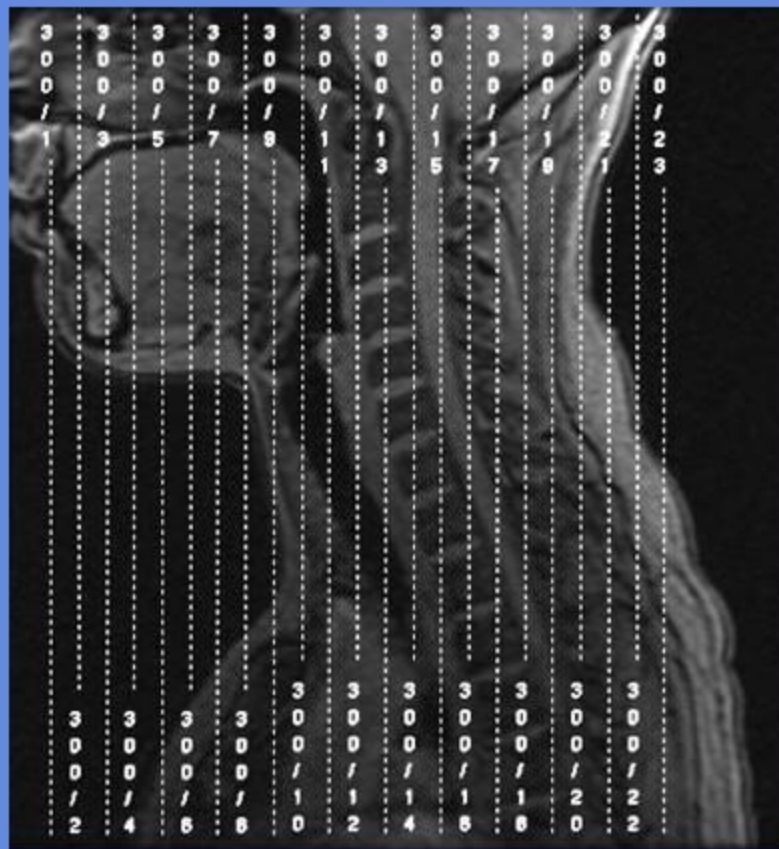
CLINICAL INDICATIONS: Numbness, Pain ,H/A'S,Cancer

parameter	SERIES 1	SERIES 2	SERIES 3	SERIES 4	SERIES 5	SERIES 6	SERIES 7	SERIES 8
description	3-PLN LOC	STIR COR	T1 COR	STIR AX	GRE AX	T1 AX	T1 COR C+	T1 AX FS C+
entry	supine	supine	supine	supine	supine	supine	supine	supine
position	head first	head first	head first	head first	head first	head first	head first	head first
coil	CTLTOP	NEUROVAS	NEUROVAS	NEUROVAS	NEUROVAS	NEUROVAS	NEUROVAS	NEUROVAS
plane	3-PLN	CORONAL	CORONAL	AXIAL	AXIAL	AXIAL	CORONAL	AXIAL
pulse seq.	FGRE	FSEIR	FSE-XL	FSEIR	GRE	FSE-XL	fSPGR	fSPGR
im options		VB,TRF	NP,TRF	VB,TRF	FC,NPW,Z512	NP,TRF	EDR,Z512	EDR,Z512
PSD Name								
Te		34	MIN-FUL	34	20	MIN-FUL	OUT-OF-PHASE	OUT-OF-PHASE
TR		6600	491	6600	550	491	150	150
TI		150		150				
flip angle					20		90	80
ETL		18	2	18		4		
RBW		50	50	50	16	31	31	31
SATS		S,I	S,I	S,I	S,I	S,I	FAT(special) S,I	FAT(special) S,I
FOV	25	26	26	26	26	26	26	26
slice thick	5	6	6	5	5	6	6	6
spacing	5	2.5	2.5	2.5	2.5	2.5	2.5	2.5
F Phase	256	512	512	512	256	320	256	256
P Phase	128	192	192	192	192	192	192	192
NEX	1	4	2	4	2	3	3	4
Phase FOV	1	1	1	1	1	1	1	1
FREQ DIR		S/I	R/L	S/I	A/P	A/P	S/I	S/I
COVERAGE	spine	NECK	NECK	NECK	NECK	NECK	NECK	NECK
contrast							1mmol/kg	1mmol/kg

comments: Marker(s) on ROI

SOFT TISSUE NECK

CORONAL



AXIAL

