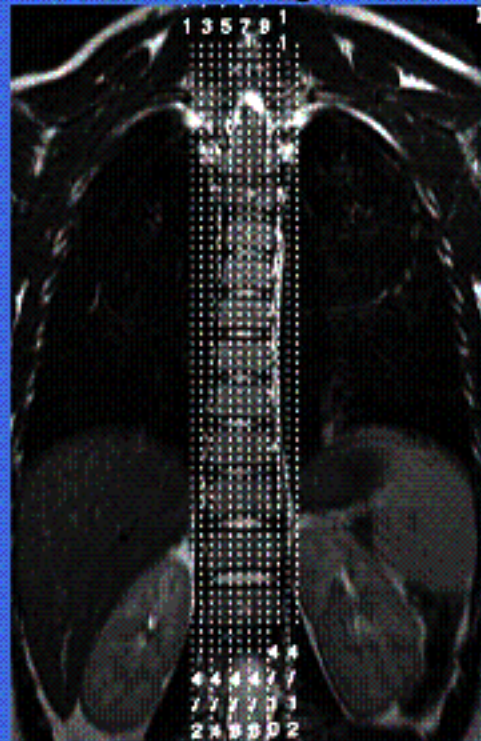


# THORACIC SPINE

CLINICAL INDICATIONS:		Numbness, Pain ,H/A'S,Cancer, Kyphoplasty					
parameter	SERIES 1	SERIES 2	SERIES 3	SERIES 4	SERIES 5	SERIES 6	SERIES 7
description	3-PLN LOC	SAG LOC	T2 SAG	T1 SAG	GRE SAG	T2 AX	GRE AX
entry	supine	supine	supine	supine	supine	supine	supine
position	head first	head first	head first	head first	head first	head first	head first
coil	CTLTOP	CTL MID	CTL MID	CTL MID	CTL MID	CTL MID	CTL MID
plane	3-PLN	SAGITTAL	SAGITTAL	SAGITTAL	SAGITTAL	AXIAL	AXIAL
pulse seq.	FGRE	FRFSE	FRFSE	FSE-XL	GRE	FRFSE	3D TOF
im options		NP,TRF	NP,TRF	NP,TRF	NP,TRF,VB,FC	NP,FC,TRF,Z512	
PSD Name							
Te		110	110	MIN-FULL	17	110	17
TR		4000	4000	450	475	3750	625
TI							
flip angle					10		20
ETL		31	31	2		22	
RBW		41	41	21	12.5	32	11
SATS		A,S,I	A,S,I		A,S,I	R,L,S,I,	
FOV	25	34	34	34	34	20	20
slice thick	5	3	3	3	3	4	4
spacing	5	1	1	1	1	1	1
F Phase	256	448	448	384	256	256	256
P Phase	128	224	224	224	192	192	192
NEX	1	2	4	3	2	4	2
Phase FOV	1	1	1	1	1	1	1
FREQ DIR		A/P	A/P	A/P	S/I	A/P	R/L
COVERAGE	spine	spine	spine	spine	disc	disc	disc
contrast							
comments:	<p>Routine protocol is Sagittals with (AX Thur Pathology)</p> <p>If h/o cancer inject GADO, run routine SAG then AX thur pathology.</p> <p>Kyphoplasty : Sags with Ax thur FX (may decrease scan RES. for patient comfort)</p>						

# THORACIC SPINE

T1, T2 & GRE Sagittal offsets



Typical counting LOC



Typical Axial Locator  
with T1 labeled

