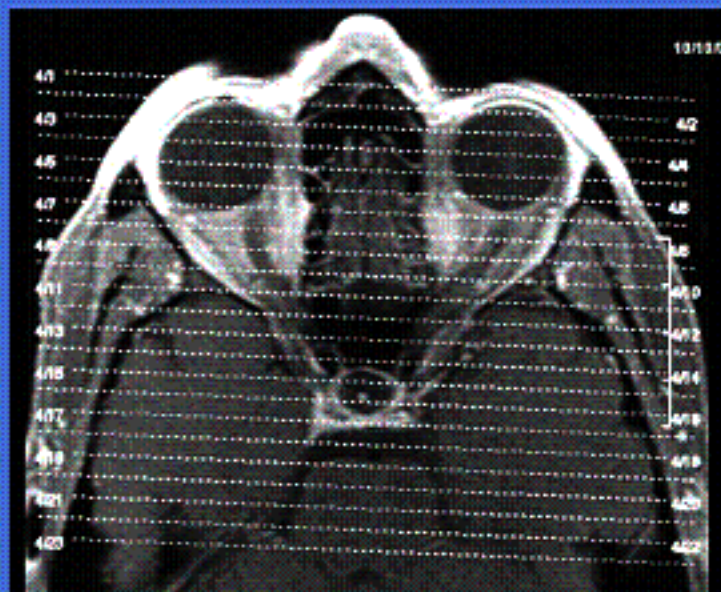


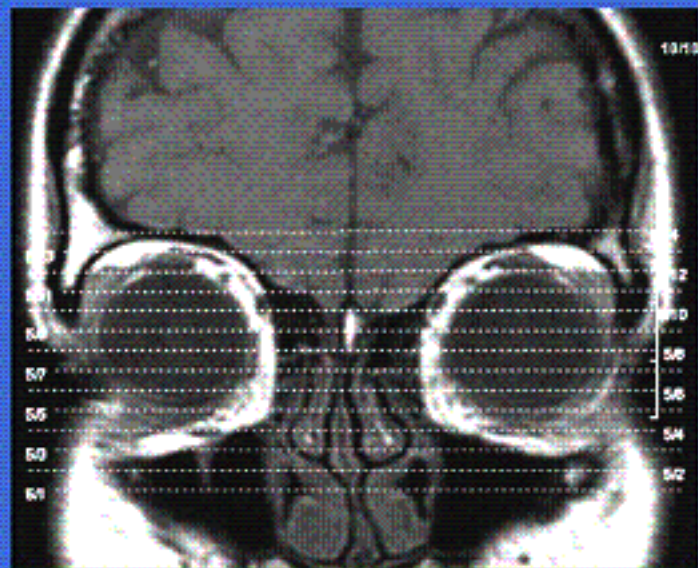
TRIGEMINAL / ORBIT IMAGE

CLINICAL INDICATIONS:		Blurred vision, Double vision, Trigeminal nerve,									
parameter	SERIES 1	SERIES 2	SERIES 3	SERIES 4	SERIES 5	SERIES 6	SERIES 7	SERIES 8	SERIES 9	SERIES 10	SERIES 11
description	3-PLN LOC	T1 SAG	DWI AX	T2 AX	FLAIR AX	T1 AX	T1 COR	T2 COR FS	T1 COR FS C+	T1 AX FS C+	T1 C+
entry	supine	supine	supine	supine	supine	supine	supine	supine	supine	supine	supine
position	head first	head first	head first	head first	head first	head first	head first	head first	head first	head first	head first
coil	Head	Head	Head	Head	Head	Head	Head	Head	Head	Head	Head
plane	3-PLN	SAGITTAL	AXIAL	AXIAL	AXIAL	AXIAL	CORONAL	CORONAL	CORONAL	AXIAL	AXIAL
pulse seq.	FGRE	spin echo	EPI	FRFSE / PROP	T2flair	spin echo	spin echo	spin echo	spin echo	spin echo	spin echo
im options		EDR,ZIP5 12	DIFF	TRF,ZIP5 12,FC	TRF,ZIP5 12,FC	EDR, ZIP512	ZIP512,V B,TRF	ZIP512,VB, TRF	ZIP512,VB,T RF	ZIP512,VB,T RF	EDR, ZIP512,VB
PSD name											
Te		Min Full	Min	102	140	Min Full	Min	90	Min	Min	Min Full
TR		475	8000	4500	9000	550	400	8600	700	400	550
TI					2200						
flip angle											
ETL				13				25			
RBW		20		41	20	20	16	41	21	16	20
SATS								FS,S,I	FS,S,I	FS,S,I	
FOV	25	23	24	24	24	24	19	19	19	19	24
slice thick	5	5	5	5	5	5	3	3	3	3	5
spacing	5	1	1	1	1	1	1.5	1.5	1.5	0.3	1
F Phase	256	320	128	320	320	320	256	256	256	256	320
P Phase	128	192	128	192	224	192	192	192	192	128	192
NEX	1	1	2	1	1	1	2	4	2	2	1
Phase FOV	1	1	1	1	1	1	1	1	1	1	1
FREQ DIR		S/I	R/L	A/P	A/P	A/P	S/I	S/I	S/I	S/I	A/P
COVERAGE	BRAIN	BRAIN	BRAIN	BRAIN	BRAIN	BRAIN	TRIGEM	TRIGEM	TRIGEM	TRIGEM	BRAIN
contrast									1mmol/kg	1mmol/kg	1mmol/kg
comments:	Cancer patients run T1 POST all 3 planes										

Trigeminal / Orbit



Coronal Orbit



Axial Orbit